

Catalog Number
Notes
Type

FEATURES & SPECIFICATIONS

INTENDED USE

This fresh and innovative track head combines aesthetics with superior functionality for applications such as specialty retail, grocery, galleries, museums, hospitality, residential and educational environments.

CONSTRUCTION

Lamp holder: Clear cylinder glass with brushed nickel fittings sheds light in desired areas. Kit includes (1) 44" white track (120V), (1) floating feed, (3) MR16 GU10 halogen lamps, and (3) LTHCYLD adjustable track heads.

Adaptor: Low-profile injection-molded track mounting adaptor compatible with Lithonia Lighting track series (LTS), Cooper Lighting Halo® "H" L641 and L651 Track, and Hampton Bay™ Track.

Note: Lithonia Decorative Track Lighting components are not compatible with Lithonia Commercial Track Lighting components. Installation of mixed components will result in risk of shock hazard or fire, damage of fixture, failure to illuminate, and it does not meet UL standards.

Available in brushed nickel or oil-rubbed bronze finishes.

ELECTRICAL

50W MR16 style uses a GU10 base 12V porcelain socket. Lamp included.

120 VAC 60Hz

LISTINGS

ETL_{US} Listed to UL1574 Track Lighting Standard.

Dry location.

WARRANTY

1-year limited warranty. Complete warranty terms located at:

www.acuitybrands.com/CustomerResources/Terms_and_conditions.aspx.

Actual performance may differ as a result of end-user environment and application.

Note: Specifications subject to change without notice.

Decorative Track Lighting

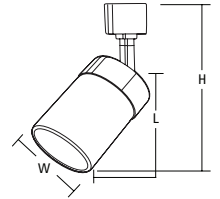
LTKCYLD MR16 SERIES

Halogen Line Voltage Track Kit
MR16 GU10 Lamps



Specifications			
Lamp designation	Width	Length	Maximum height
MR16	3-1/4	4-3/4	7

All dimensions are inches (centimeters) unless otherwise indicated.



44" white track (120V)
(included)



LTFC - floating feed
(included)



LTHCYLD (qty 3) -
adjustable track heads
(included)

ORDERING INFORMATION

All configurations of this product are considered "standard" and have short lead times.

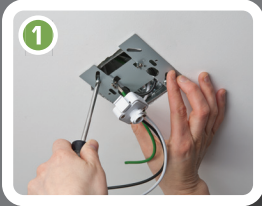
Example: LTKCYLD MR16GU10 BN

LTKCYLD	MR16GU10	
Series	Lamp/Lumen output	Finish
LTKCYLD Clear cylinder glass track kit	MR16GU10 50W, 600 lumens (per head)	BN Brushed nickel ORB Oil-rubbed bronze

LTKCYLD MR16 Halogen Line Voltage Track Kit

INSTALLATION INSTRUCTIONS

Easy to Install in 4 Steps



1 Install mounting plate to ceiling.



2 Connect track to mounting plate and wire.



3 Attach track to ceiling.



4 Simply twist heads onto track.